

# BUDGET SPEECH 2020



## YOU'LL PAY LESS

Personal Income Tax relief

R10 000 a month = **10%** ↓

R100 000 a month = **1.5%** ↓

No transfer duties

< R1 million



Limit increase on tax-free savings accounts  
**R33 000 to R36 000** ↑

## YOU'LL PAY MORE

Fuel will cost an extra **25 cents** per litre



The plastic bag levy will increase by **13 cents** to **25 cents**



## Sin tax



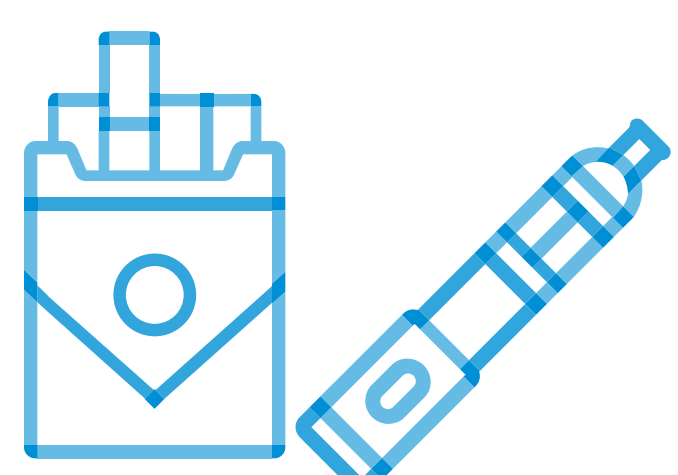
Tax on malt beer, wine and spirits will increase by **4.4%**

340ml beer/cider ↑ **8c** | 750ml wine ↑ **14c**

750ml spirits (including whisky, gin or vodka) ↑ **R2.89**

Tax on sparkling wine will increase by **6%**

750ml sparkling wine ↑ **61c**



Regular smokers will pay **4.4%** more in taxes

A pack of 20 ↑ **74c**

Electronic cigarettes will remain **untaxed** until 2021

Pipe and cigar smokers will pay **7.5%** more in taxes

35 gram pipe tobacco ↑ **40c**

23 gram cigar ↑ **R6.73**

